

TECHNICAL BULLETIN**INSTALLATION****MAINTENANCE ISSUE**

For the Attention of : Service Engineers, Installers, Trade Customers, Testers, Training Dept, H & S Manager etc.....

Date : 19-03-2010

Product : MRLi Lifts using GEV valve assemblies and Pawl Device.

Subject : Modification to power supply wiring.

Pages :

Originator : Stannah Lifts Ltd, Anton Mill, Andover, Hants SP10 2NX 01264 339090

Overview

As a result of introducing the Pawl device and Blain Valve to MRLi lifts it has been found that the power required to energise the VMD hydraulic valve is sometimes insufficient. This, in the majority of instances, becomes apparent during testing before handover, but may also present itself whilst the lift is in service. The symptoms are that the lift does not lower with full load in the car.

Details

To overcome this issue a simple and straightforward modification can be undertaken.

Notes:-

The modification is to change the feed to the valves from VM+ to C+ as shown overleaf.

Action Required

Factory :- All Lifts produced from March 22nd 2010 will be modified by the factory.

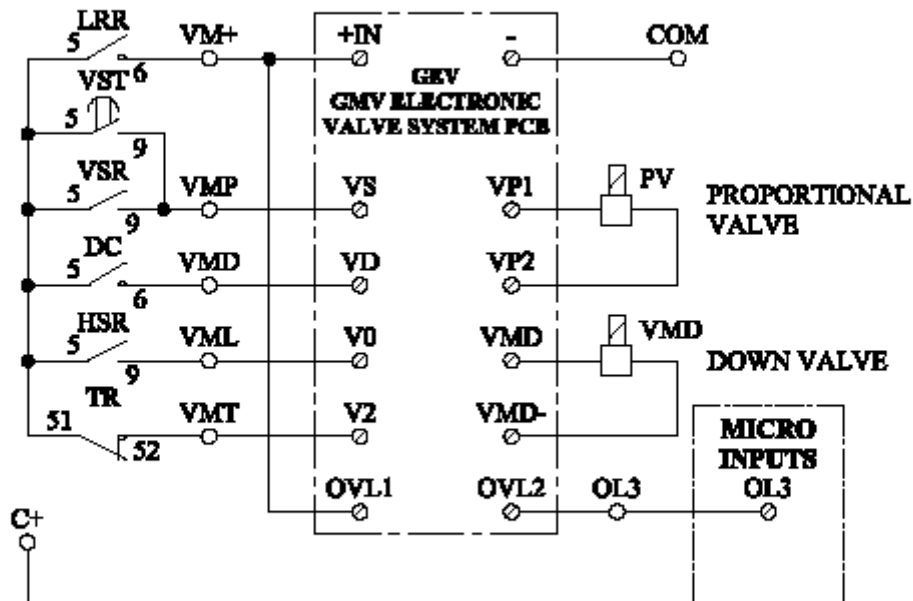
Installation Test :- All lifts handed over from receipt of this bulletin are to have the modification carried out.

Service :- All lifts found to have operational problems should have the modification carried out.

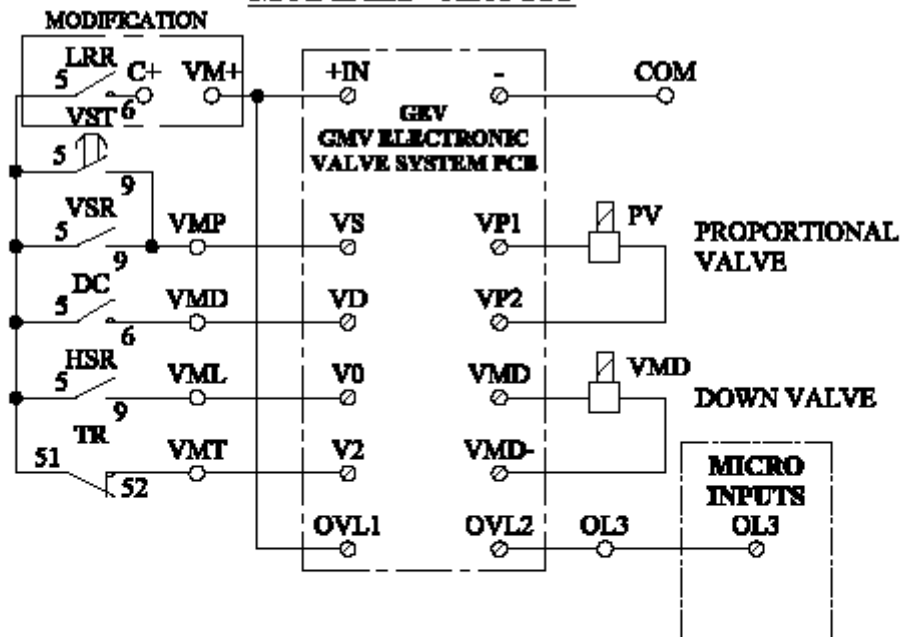
No parts are required other than a short length of single core cable.


DELTA

ORIGINAL CIRCUIT



MODIFIED CIRCUIT



NAME: G. COOPER	DATE: 22/02/99
CHECKED: E. JACKSON	DATE: 22/02/99
GMV MODIFICATION WIRING FOR DELTA DELTA	
	
HEAD OFFICE: Avonex Ltd Avonover Engineering WELLS, Somerset TEL: 01284 20920 Fax: 01284 20921	
DRAWING NO: 1009240	REV:

STAR/DELTA

